

[www.ALtech-UK.com](http://www.ALtech-UK.com)

**AL**  
TECH UK



**AL**  
wind

Industrial Label Rewinders & Counters

Image above shows ALwind 140 LH Rewind & RH Unwind

---

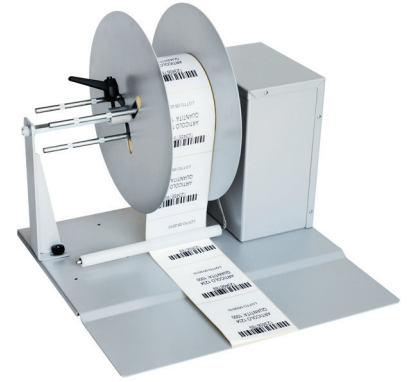
ALwind label unwinders and rewinders are robust powered units, controlled by intuitive to use dancing arm tension controller, allowing feed/rewind synchronisation with virtually any thermal label printer (or colour ink jet/laser).

They feature full steel construction, with a large base on which to sit the printer, ensuring positional continuity and reliable operation and automatic stopping in the event of reel end or web break, with acoustic alarm to alert the operator

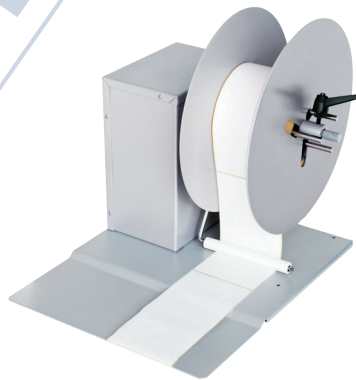
They are available in two model widths depending on the maximum printing width of the connected printer; ALwind S for labels up to 140mm max, e.g. for any 4" machine such as the Toshiba BSX4, SATO CL408, Zebra Z4M; and up to 230mm max, for wide web 6", 8" and 10" label printers such as the Toshiba BSX8 and Zebra Xi 170.



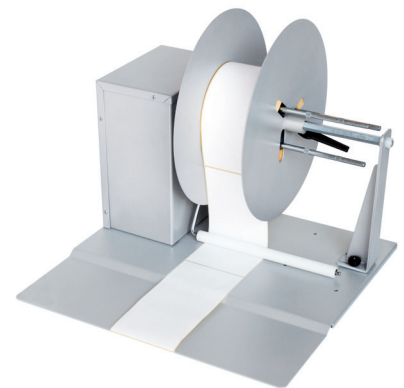
ALwind 140 RW LH



ALwind 230 RW LH



ALwind 140 UW RH



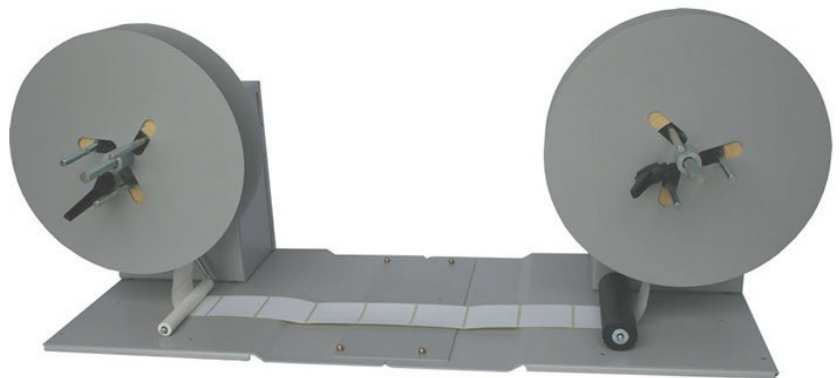
ALwind 230 UW RH

---

### Reel to Reel Unwind Rewind System - ALwind RTR

For standalone label to label rewinding; e.g. to reverse the leading edge of a label, change the core size or reduce the reel size, ALwind RTR (reel to reel) provides an extremely flexible and economical in-house solution.

As per standard ALwind machines, the RTR model is available in both S (140mm) and L (230mm) max width formats, and includes adjustable core spindles, for label core from 46mm to 110mm, able to run in either a clockwise or anti clockwise direction with automatic stopping on reel end.



ALwind RTR 230

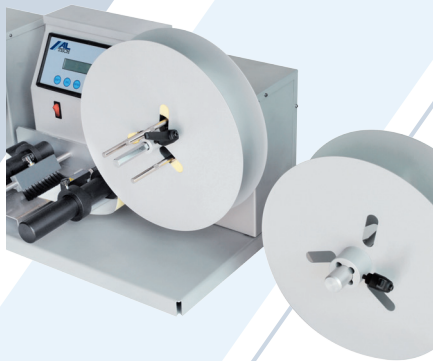
---

## ALcount

ALcount is a reel to reel unwind / rewind system for roll format labels with the facility to count a set quantity of labels and/or check for missing labels on the reel.



ALcount with changeable reels



In more detail the unit can:

- Rewind labels clockwise or anti-clockwise and with different core diameters
- Can count labels up or down or to a pre set value
- Can check for label presence on the reel and stop if a label is missing
- Can be integrated with a smart vision sensor or vision camera to check text or pattern match
- Can be integrated with a barcode verifier to check for barcode readability
- Can be used as a simple label rewinder - to change the leading hand of the label (e.g. for customer applying wraparound labels)

ALcount has two standard modes of operation:

When working as a rewinder the unit can rewind reel format labels of a maximum 300 mm diameter, wound either face in or face out, with a core diameter ranging from 46 to 110 mm. The maximum rewinding speed is over 50 mt/min.

When working as a control device, a photocell will not only count the labels but also check their presence on the reel, with an audible signal and automatic stop function where a missing label is detected. An ultrasonic detector is available for processing transparent labels as well as smart vision sensors and/or barcode check scanners for printed label inspection.

## ALwind S

- Max Label Width: 140 mm
- Speed: 0-25 m/m
- Roll diameter: 300 mm
- Adjustable spindle: 40 -110 mm
- Supply voltage: 230Vac - 50Hz
- Power consumption: 30 W
- Dimensions: 330x410x370 (H)
- Weight: 13 Kg

## ALwind L

- Max Label Width: 230 mm
- Speed: 0-25 m/m
- Roll diameter: 300 mm
- Adjustable spindle: 40 -110 mm
- Supply voltage: 230Vac - 50Hz
- Power consumption: 30 W
- Dimensions: 430x410x370 (H)
- Weight: 15 Kg

## ALcount

- Max label width: 120mm
- Roll diameter: 300mm
- Power supply: 230Vac - 50 Hz
- Dimensions: 850x350x380 (H)
- Speed: Variable depending on the rewinding diameter
- Spindle diameter: 46 - 110 mm
- Power consumption: 150 W
- Weight: 30 kg



Tel: 0800 612 6205  
Int: +44(0)1656 654 403  
Fax: +44(0)1656 649 555  
E-Mail: sales@altech-uk.com  
Web: www.ALTECH-UK.com

ALTech UK Labelling Technologies Ltd  
Unit 2220, Central Park, Western  
Avenue, Bridgend, Mid Glamorgan,  
South Wales. CF31 3RT